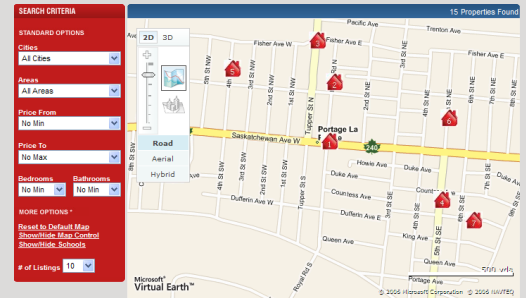


# Enhanced Searches with Mapping Tools

**Innovative** *new mapping and imagery solutions from the Microsoft Virtual Earth platform brings customers, real estate owners and agents better ways to preview properties and surrounding areas with bird's-eye imagery.*



Lone Wolf Real Estate Technologies, one of the leading providers of residential real estate website solutions, front office software as well as back office accounting software announces today that it has chosen the Microsoft Virtual Earth mapping and location platform to enhance its home search experience for their website clients.

Lone Wolf is excited to be able to provide their clients with a highly immersive home search experience using the Microsoft Virtual Earth platform. This includes bird's-eye imagery, which is a highly interactive mapping feature providing aerial imagery with a 45-degree view of every home for sale in a specific area. The imagery can be adjusted to view the property from different angles and empowers homebuyers to gain a detailed perspective of a specific property and its surroundings by allowing for greater visibility than satellite mapping.

"We are thrilled to have integrated Microsoft's technology giving us the ability to provide our clients with the best possible mapping search tools online. We wanted to be able to offer our clients and their users the highest quality mapping features to enhance their home search experience," says Lorne C. Wallace, C.A. owner of Lone Wolf Real Estate Technologies.

"The combination of Lone Wolf's Global Wolf web site solution for owners and agents, and the bird's-eye imagery of Microsoft Virtual Earth, provides people with an incredibly powerful and easy way to search online for a new home" said Stephen Lawler, General Manager of the Virtual Earth Business Unit at Microsoft Corp. "We are excited that Lone Wolf is showcasing the ways in which rich mapping and imagery solutions such as the Virtual Earth platform can create a valuable experience for their customers."

Microsoft®  
**Virtual Earth™**